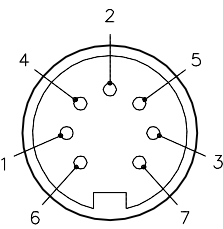
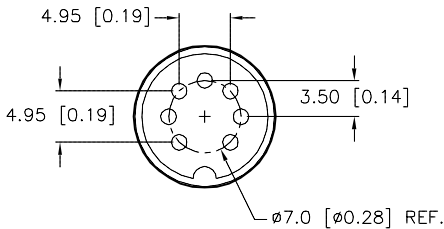


FEMALE END VIEW



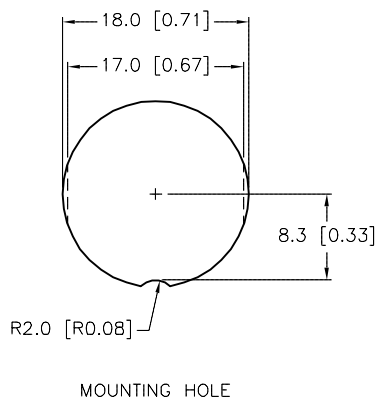
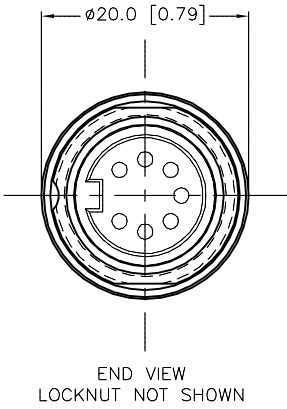
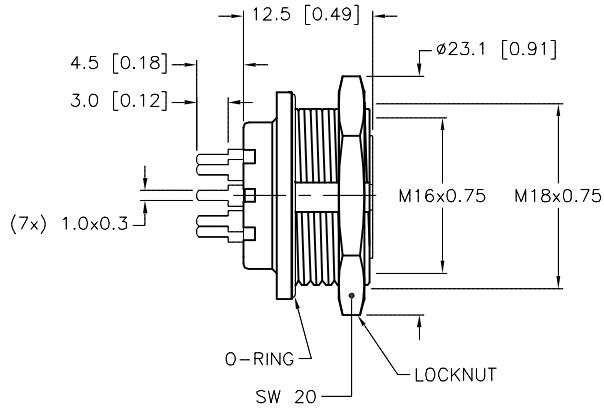
M16 connector

PCB BOARD LAYOUT

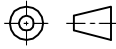


SPECIFICATIONS

CONTACT CARRIER MATERIAL	PBT
CONTACT MATERIAL/PLATING	BRASS/GOLD
HOUSING MATERIAL/PLATING	DIE-CAST ZINC/NICKEL
RATED CURRENT [A]	5.0 A
RATED VOLTAGE [V]	125 V
CONDUCTORS	PCB PINS
TEMPERATURE RANGE	-30°C to +80°C (-22°F to +176°F)
PROTECTION CLASS	MEETS IEC IP67
MAX PANEL THICKNESS	4.5mm [0.18"]



SOURCE DRAWING - FOR REFERENCE ONLY

<div>RELATED DOCUMENTS</div> <div>1.</div> <div>2.</div> <div>3.</div> <div>4.</div>					<div>3RD ANGLE PROJECTION</div> <div></div>		<div>THIS DRAWING IS CONFIDENTIAL AND THE PROPERTY OF TURCK INC. USE OF THIS DOCUMENT WITHOUT WRITTEN PERMISSION IS PROHIBITED.</div>		<div>3000 CAMPUS DRIVE MINNEAPOLIS, MN 55441 1-800-544-7769 (763) 553-7300 (763) 553-0708 fax turck.com</div>					
					<div>MATERIAL</div> <div>SEE SPECIFICATIONS</div>		<div>ALL DIMENSIONS DISPLAYED ON THIS DRAWING ARE FOR REFERENCE ONLY</div>		<div>DRFT</div> <div>RDS</div>		<div>DATE</div> <div>04/04/07</div>		<div>DESCRIPTION</div> <div>BKFD 7-PCB</div>	
									<div>APVD</div>		<div>SCALE</div> <div>1 = .7</div>			
									<div>FINISH</div> <div>SEE SPECIFICATIONS</div>		<div>UNIT OF MEASUREMENT</div> <div>MILLIMETER [INCH]</div>			
<div>CONTACT TURCK FOR MORE INFORMATION</div>		<div>DO NOT SCALE THIS DRAWING</div>		<div>FILE: U2-05845</div>		<div>SHEET 1 OF 1</div>								
								<div>B</div> <div>UPDATE CONTACT CARRIER SPECIFICATION</div> <div>KMY</div> <div>09/23/13</div> <div>43385</div>						
<div>REV</div> <div>DESCRIPTION</div> <div>BY</div> <div>DATE</div> <div>ECO NO.</div>														